

OCCUPANCY PROFILING



Buildings are an expensive resource, both to construct and to maintain, and it is therefore essential that they are used efficiently. Consequently, building and facilities managers need to understand clearly how their rooms and spaces are being utilised, this may be, for example, to monitor the usage of teaching spaces within a university, meeting rooms, or the frequency of access to aisles in a large warehouse.



OCCUPANCY PROFILING

SmartScan now has the ability to provide occupancy profiling information. The data collected from the SmartScan Sensor, incorporated into the luminaire, can be used to monitor room occupancy even when the lamp is turned off.

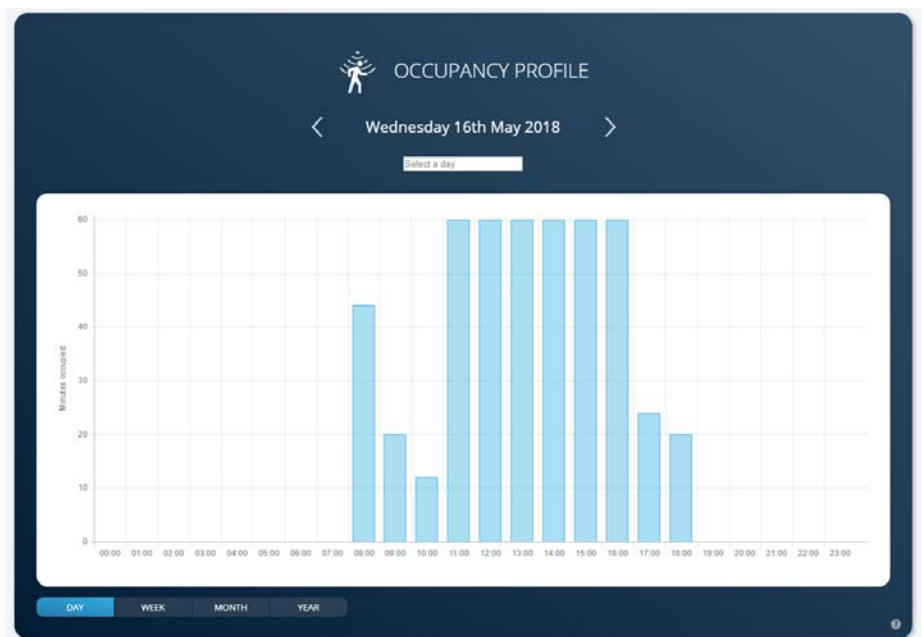
HISTORIC OCCUPANCY PROFILING

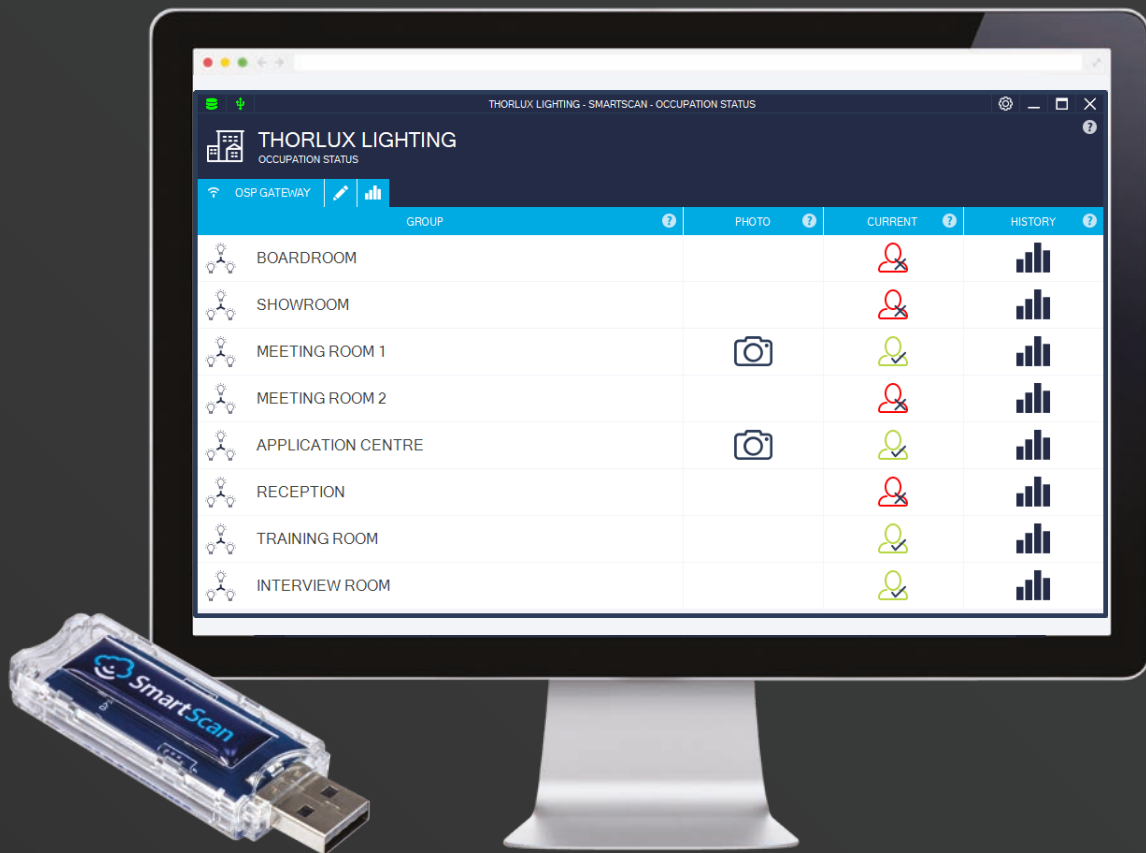
Each day occupancy data is gathered by the SmartScan Gateway, from every SmartScan sensor, and included in the Gateway's status upload to the SmartScan website.

Authorised website users can view the occupancy profiles on annual, monthly, weekly or daily basis. This data is available for groups or individual luminaires.

KEY FEATURES

- No additional equipment/software is required
- Occupancy profiles are stored off-site and can be viewed at any time by an authorised user
- Reports are available for all groups and individual luminaires





LIVE

OCCUPANCY PROFILING

In certain applications live occupancy profiling may be required. For example, a receptionist or PA may need to know whether board, conference or meeting rooms are occupied or vacant.

SmartScan Live Profiling allows a number of groups to be monitored in real time, with live occupancy status displayed on a laptop or PC screen.

By using the SmartScan Occupancy Profile software in conjunction with a SmartScan Dongle, it is possible to monitor a room's status in real time. The dongle monitors occupancy signals on the SmartScan mesh network and updates the status display instantly.

KEY FEATURES

- Up to 15 Groups per network can be monitored
- More than one live profile setup may be installed on the same network to allow monitoring by multiple users

Note: When Occupancy Profiling is enabled (live or historic) a maximum of 250 luminaires can be connected to the Gateway.