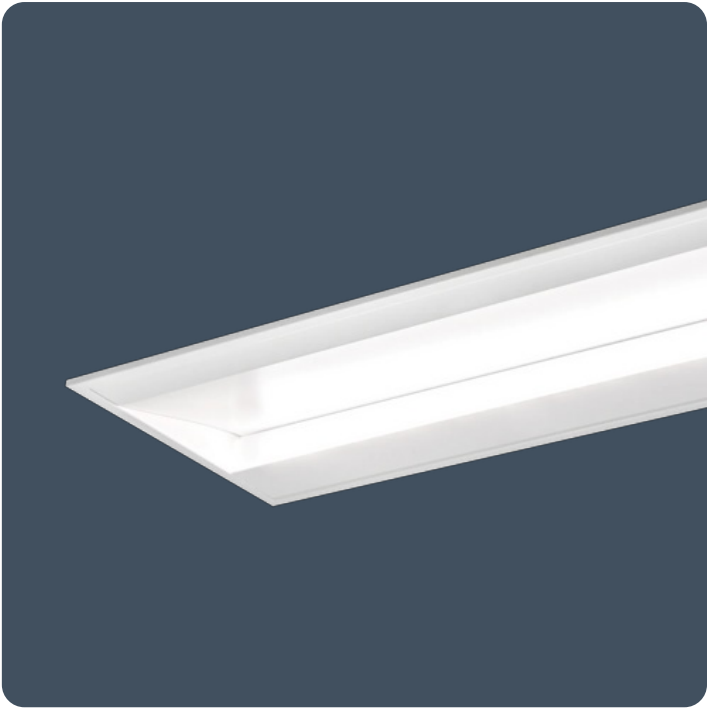


Recessed linear wall wash luminaires

Recessed mounted wall wash luminaires. Asymmetric light distribution ideal for illuminating vertical surfaces.

Applications: reception areas, retail, display.

- Asymmetric distribution providing uniform illumination of vertical surfaces
- Acrylic ribbed satin diffuser
- Hinged reflector for easy access to wiring terminations



IP20

Up to 92.7 LL/CW

Specification

Mounting	Recessed	IP rating	IP20
Nominal size	600 mm 1200 mm		

Lighting

Lumen output	1,895 lm - 4,080 lm	Efficacy	Up to 92.7 LL/CW
--------------	---------------------	----------	------------------

Power

LED power	19 W - 38 W	Circuit power	23 W - 44 W
-----------	-------------	---------------	-------------

LED characteristics

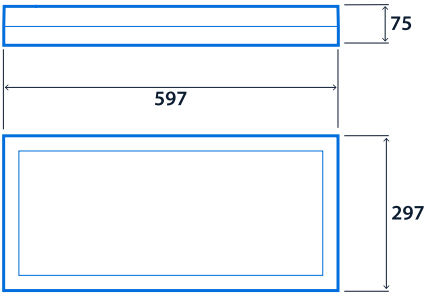
CRI	80+	Colour temperature	3000 K 4000 K
Rated life (hours)	60 K - L70/B10		

Compliance

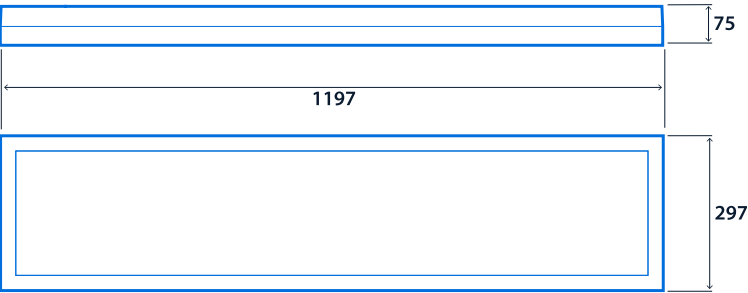
UKCA	Yes	CE	Yes
------	-----	----	-----

Dimensions

600 x 300



1200 x 300



**Click or scan here**  
**View Quadline variants using**  
**our online filtering tool**



Information is correct as of 29 Dec 2024, however must not be interpreted as a guarantee of individual product performance and/or characteristics. We reserve the right to alter specifications and designs without prior notice.