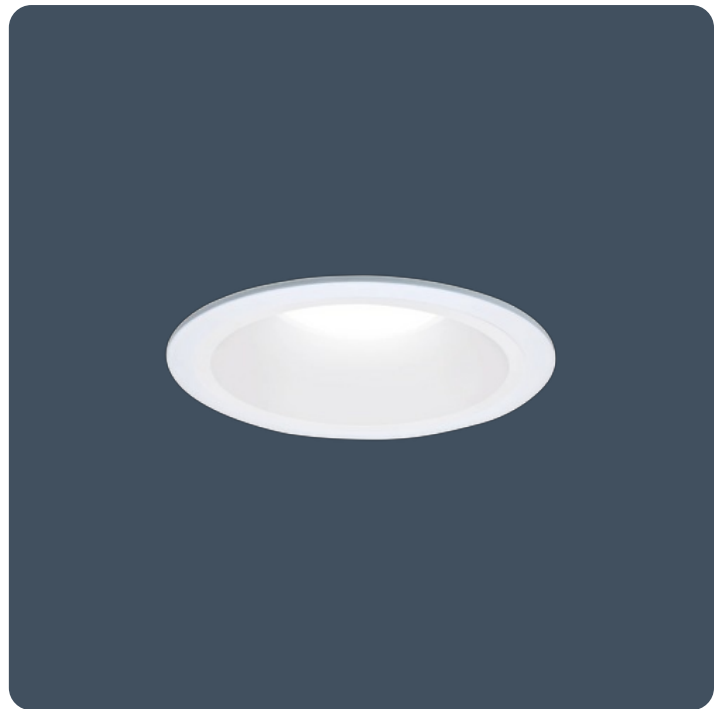


Non-ferrous circular downlight for use in MRI rooms

Non-ferrous recessed downlighter luminaires for use in magnetic resonance imaging (MRI) rooms. Remote gear box and non-ferrous downlighter head designed specifically to meet the requirements of MRI rooms. Non-maintained emergency version also available.

Applications: MRI rooms.

- Non-ferrous construction, designed for use in MRI rooms
- Two output circuits per DALI gearbox where each circuit can power a minimum of 5 downlighter heads, up to a maximum of 8
- Downlighter wiring configured for low EMI when used with EMI filters (supplied by others)
- Emergency status indicator LED can be remotely mounted outside of the room
- DALI dimmable control gear as standard. Can be used with push to make retractable switch for dimming and switching



IP20

133.3 LL/CW

SMARTSCAN

LUXGUARD

Specification

IP rating **IP20**

Lighting

Lumen output **1,600 lm** Efficacy **133.3 LL/CW**

Emergency data

Emergency lumen output **800 lm** Emergency type **Non-maintained**
 Emergency duration **3 hours** Battery specification **Nickel Metal Hydride (NiMH)**

Power

LED power **6 W - 11 W** Circuit power **12 W**

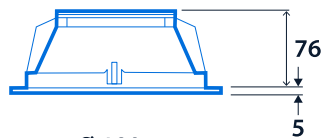
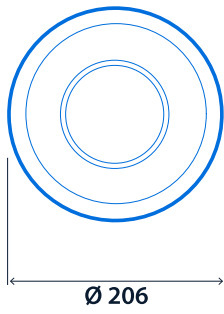
LED characteristics

CRI **80+** Colour temperature **4000 K**
 Rated life (hours) **100 K - L80/B10**

Compliance

UKCA **Yes** CE **Yes**

Dimensions

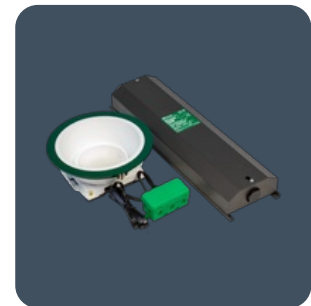
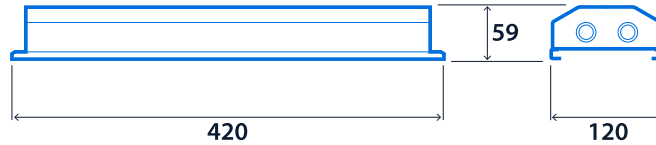


Cut-out - Ø 180
Minimum void depth - 110

LED Downlighter Power Unit



Emergency LED Downlighter Power Unit



[Click or scan here](#)
View G3 MRI variants using our
online filtering tool



Information is correct as of 01 Jan 2025, however must not be interpreted as a guarantee of individual product performance and/or characteristics. We reserve the right to alter specifications and designs without prior notice.